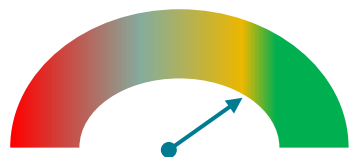


Business Plan Status Overview:

Overall Programme Status: GREEN/AMBER



The rating has been moved from green to green/amber to reflect the following issues: Compensation arrangements; PCF figures delay by CILEX; CRM; staff turnover (which the Board is already aware of)

Significant achievements include the Education Standards being approved without any issue by the LSB; the strategy and Business Plan being produced promptly; Fellow renewal numbers meeting budgeted numbers; the improvements to CRM prior conduct have been agreed and are being progressed.

Status Dashboard



Consumer:

LSB new meeting (Market Transparency, chaired by Matthew Hill)

No matters to flag



Diversity & Accessibility:

There are no issues to highlight in delivering the Business Plan

The LSB are proposing to make EDI part of the main regulatory performance assessment



Standards:

Education Standards decision received 16 June
ACCA application submitted in draft 18 June
BEIS Pioneer Fund – bids due by 15 July. FB leaving has left a gap for support
Lack of replacement compensation arrangements policy



Management actions:

CRM – prior conduct is making progress but challenges on risk matrices, entity directory, CPD and WBL portfolio. No progress on application forms yet.

Still awaiting Head of People & Culture role to be advertised by CILEX

Key:



On track



Needs support to get back on track



Needs significant support to get back on track

Business Plan: Key deliverables & exception mitigation

Quarter 2 2021 – to February Board

Consumer:

- Immigration Transparency Rule change submitted to LSB following CMA report
- Quality indicators submission to the LSB
- Update on Legal Choices progress

Diversity & Accessibility:

- Volunteer to lead on EDI collaboration – letter from Sam to LSB
- EDI whole membership data analysis - analysis commenced and high level data pulled together. Currently drilling down and cross referencing data for different characteristics like previous analyses.
- Other actions are dependant on outcomes from the strategy – Board supportive of proposed EDI focus

Standards

- BEIS Pioneer Fund has opened
- Ongoing conversation with SRA/CLC to develop outputs from design sprint (linked to Pioneer Fund) - continues
- ULaw appointed as Assessment Organisation for fast-track to practice rights
- ACCA application submission submitted in draft to the LSB on 18 June.

Management

- Management Accounts thorough full reforecast – SMT 3 hour session 15 June
- Continued review of rule change QA process – LSB published their revised rules consultation 15 June and SMT are reviewing
- CRM: finalization of CRL roadmap in conjunction with CILEX

Next reporting period – Quarter 3 2021

Consumer:

- Immigration Transparency Rule change submitted to LSB following CMA report – delayed in Q2 owing to priorities being ACCA and compensation arrangements

Diversity & Accessibility:

- EDI whole membership data analysis report to Board
- Equality data for staff and independent people published on website
- Website information on EDI updated to reflect Board agreed priorities

Standards

- Regulators Pioneer Fund bid to be submitted by 15 July
- Compensation arrangements to be finalised and consultation published by early July
- Develop rule changes for QASA removal from AP and Practitioner rules
- Commence work on MRPQ incorporation
- Approve CPQ for delivery
- Develop pilot for alternative route for practice rights
- Commence work with IFATE on developing new apprenticeship standard for CLE
- Implementation phase of education standards to commence

Management

- CRM amendments for CPD required ahead of CPD year end on 30 September.
- Misconduct case management system demonstrations